

Revised Record

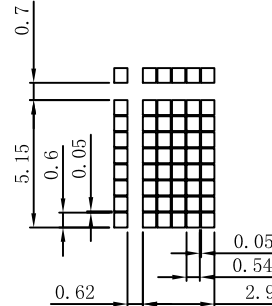
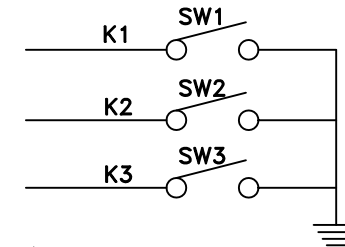
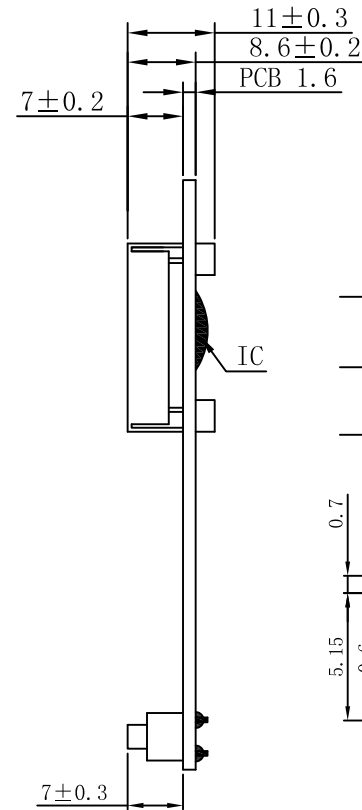
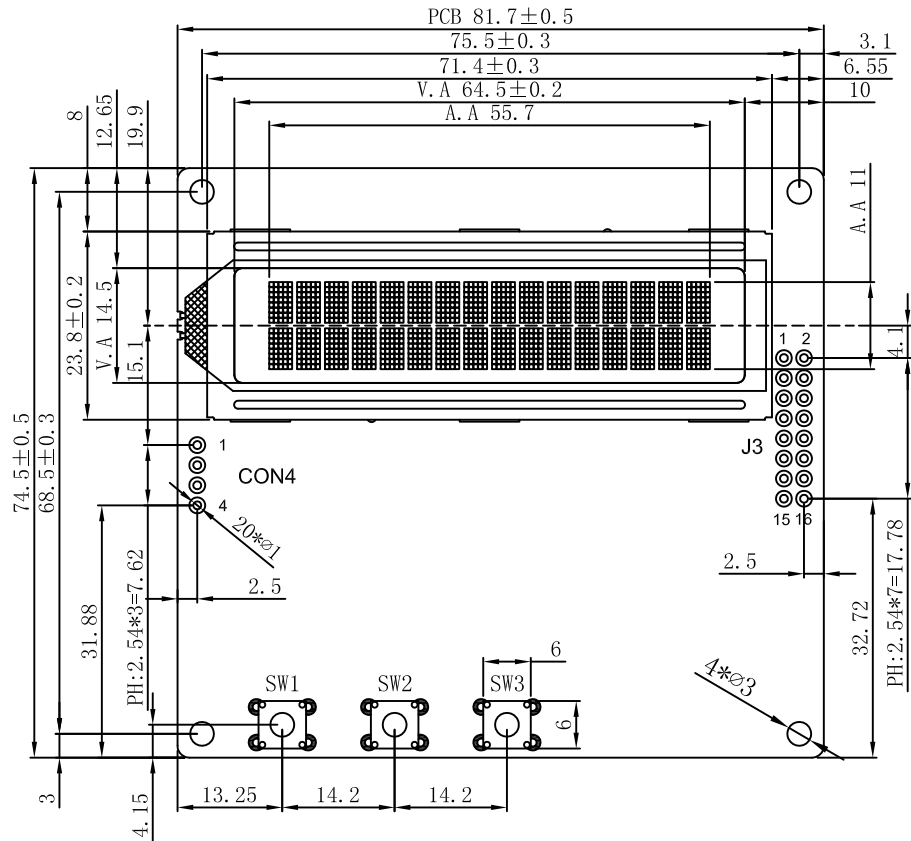
1.0

New issue

2014-09-29

INTERFACE:

CON4		J3	
1	R+(5.0V)	1	N.C
2	R0(VSS)	2	RS
3	N.C	3	RW
4	N.C	4	EN
		5	D7
		6	D6
		7	D5
		8	D4
		9	D3
		10	D2
		11	D1
		12	D0
		13	K1
		14	K2
		15	K3
		16	N.C



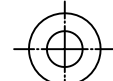
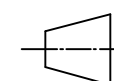
Customer's Choices:

DISPLAY TYPE:	
View angle:	
Temp:	
Voltage:	
IC:	
Fonts:	
Backlight:	
Other:	

NOTES:

- 01. DISPLAY TYPE: FSTN-B&W/POSITIVE/TRANSFLECTIVE RoHS
- 02. OPERATING VOLTAGE: VDD=5.0V
- 03. OPERATING TEMPERATURE: -20°C~+70°C
- 04. STORAGE TEMPERATURE: -30°C~+80°C
- 05. DRIVE MODE: 1/16DUTY,1/5BIAS
- 06. VIEWING DIRECTION: 6:00
- 07. DRIVE IC: ST7066U(OR-EQV)
- 08. CONNECTOR: ZEBER
- 09. BACKLIGHT: LED(WHITE)
- 10. CUSTOMER'S PART ID: BLAZE_STANDARD_PRODUCT

BLAZE Blaze Display Technology Co.,Ltd.

DESIGNED BY: BDT-26	BCB1602-03D-SERIES	VERSION: 1.0
CHECKED BY: BDT-04	 	PAGE 1 OF 1
APPROVED BY: BDT-01		UNIT: mm
Website: http://www.blazedisplay.com		DATE: 2014-09-29